

Project: Rundle Park Pond Rehabilitation

Date: 2025/2026

Client: City of Edmonton/Al-Terra Engineering

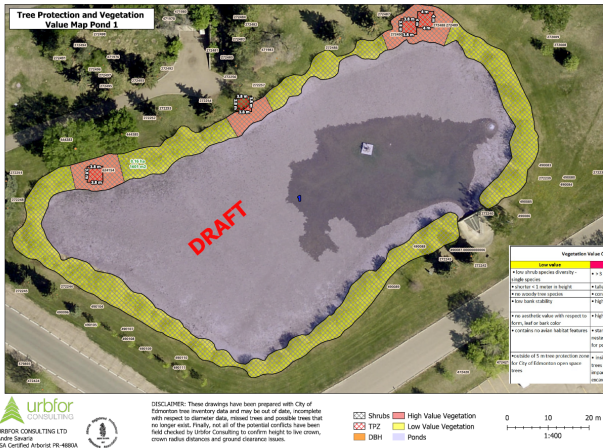
Scope: Tree Inventory of open space trees and trees > 60 mm diameter within 30 meters of pond edges; shrub inventories; tree preservation planning

Key Deliverables:

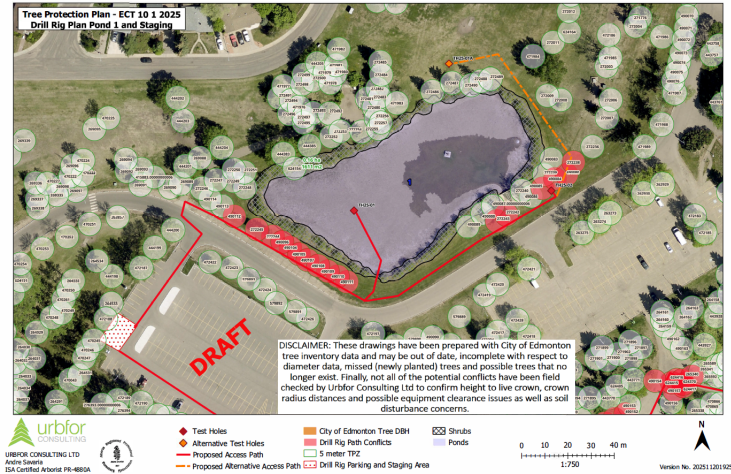
- Full tree inventory for 7 ponds ~640 trees



- Tree Preservation Plan (TPP) including scaled tree protection drawings



- Assessment of drilling access plan in support of Public Tree Permit Application



Challenges:

- Accurately assessing the high-water mark on pond edges and determining precise 30-meter buffers



Summary:

- Full tree inventory with vegetation value maps provides critical spatial data to landscape architects, urban planners, engineers and construction staff; this data and maps are being used to select the lowest impact options for pond expansion and design

NOTE: Design for the pond redevelopment is expected to begin in spring of 2026

https://www.edmonton.ca/activities_parks_recreation/parks_rivervalley/rundle-park