

Project: William Hawrelak Park Rehabilitation Project

Date: 2020 - 2025

Client: City of Edmonton – Urban Forestry

Scope: Tree Inventory of open space trees and natural areas with the City of Edmonton’s Hawrelak Park; tree preservation planning and implementation

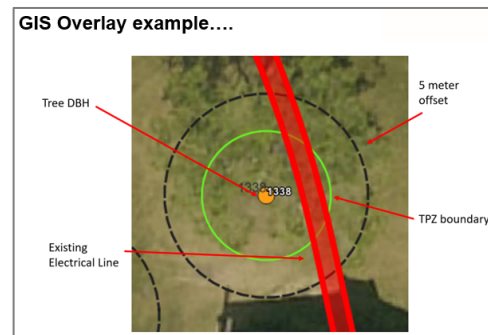
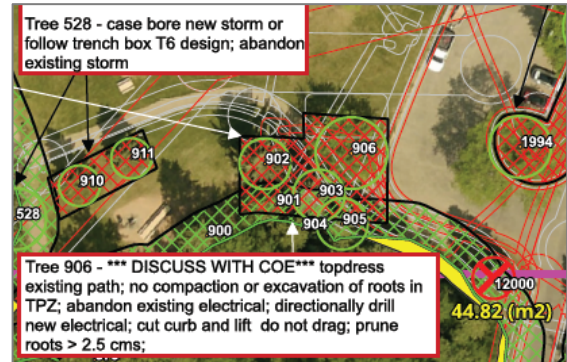


Key Deliverables:

- Spatial data set with key tree attributes for over 2800 trees; updated ecological assessments for all natural areas
- QGIS/ GPS cloud-based tree protection maps
- Tree Preservation Plan (TPP) for ~ 740 trees including scaled tree protection drawings addressing and mitigating all “above and below” ground impacts from site grading, utility lines, storm water, irrigation and distribution systems
- Public Tree Permit Application
- Tree protection implementation plan/ supervision during planning, construction and post construction monitoring
- Site inspections for 2023/ 2024 and 2025

Challenges:

- Ability to accurately map trail trees under heavy over story cover
- Assessing complex construction plans involving multiple data layers
- Time sensitive tree preservation plan preparation and submission



Summary:

- Full tree inventory along with updated uPLVI completed in 2020 provided critical spatial data to landscape architects, urban planners, engineers and construction staff to help select the lowest impact utility corridors
- This in turn allowed the drafting of a comprehensive tree preservation plan that is a requirement from the City of Edmonton
- Public Tree Permit was issued in May of 2023
- Over 45 site inspections have been carried out by an ISA Certified Arborist to ensure that the TPP is implemented as approved

NOTE: William Hawrelak Park is expected to open in late winter of 2025/ spring of 2026