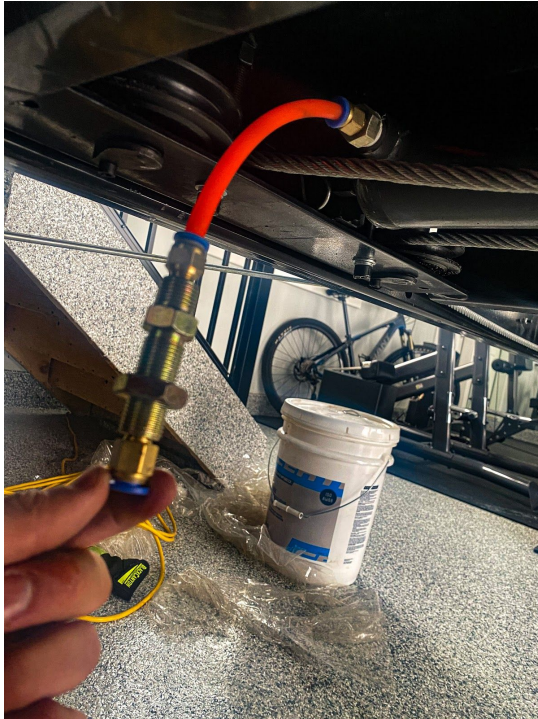


RETURN LINE INSTALL

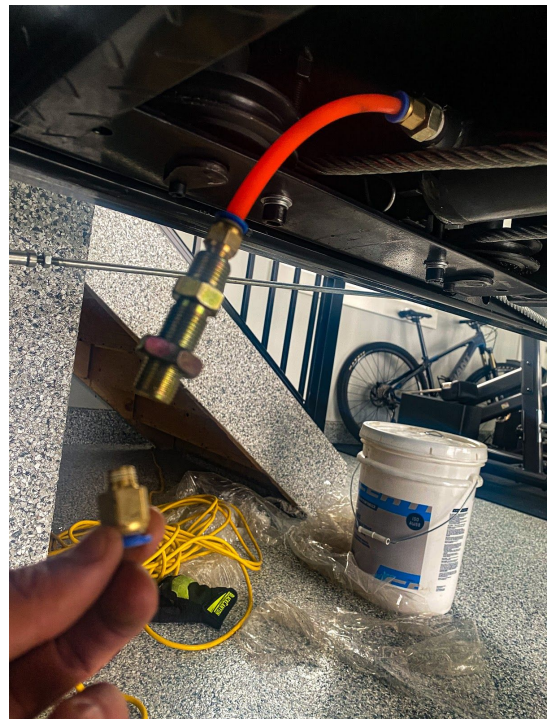


Step One:

Locate fitting on the bottom side of the cylinder runway.

Step Two:

Remove the fitting from the tip of the attachment. This should be loose already.





Step Three:

Remove the fastening nut from the threaded fitting

Step Four:

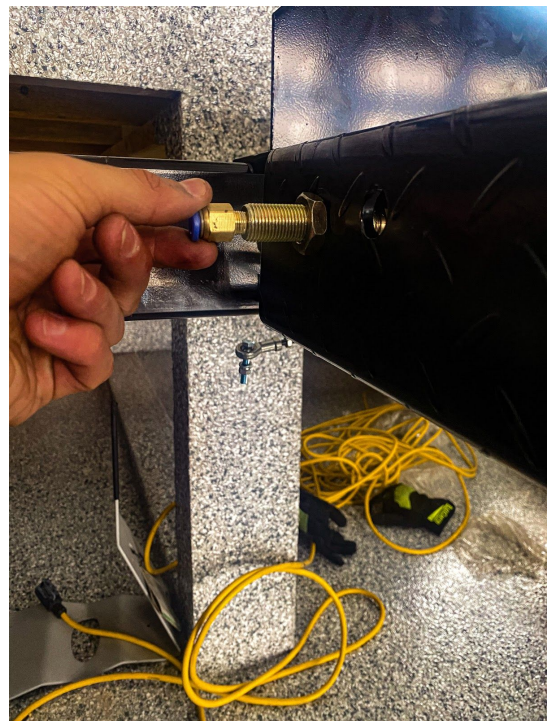
Feed the fitting through the LEFT hole on the cylinder runway.





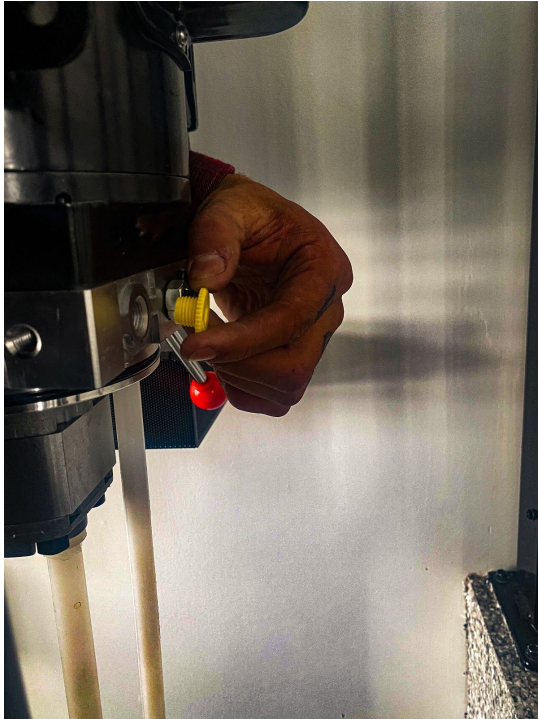
Step Five:

Re-install the fastening nut back onto the fitting.



Step Six:

Re-install the small fitting to the tip of the main assembly. Tighten using a 14mm wrench on the **front** and **back** of the fitting.



Step Seven:

Locate the yellow plastic plug on the **right** side of the motor. Remove and throw away

Step Eight:

Locate the second set of fitting inside the main hardware box. These will be in their own clear bag.



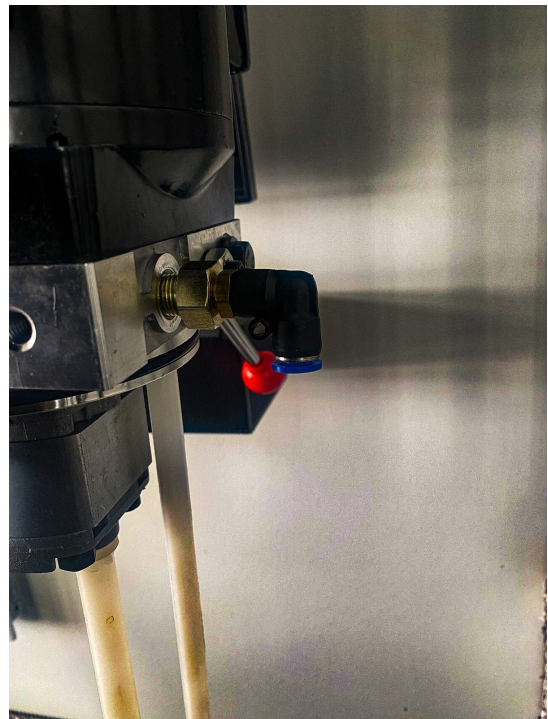


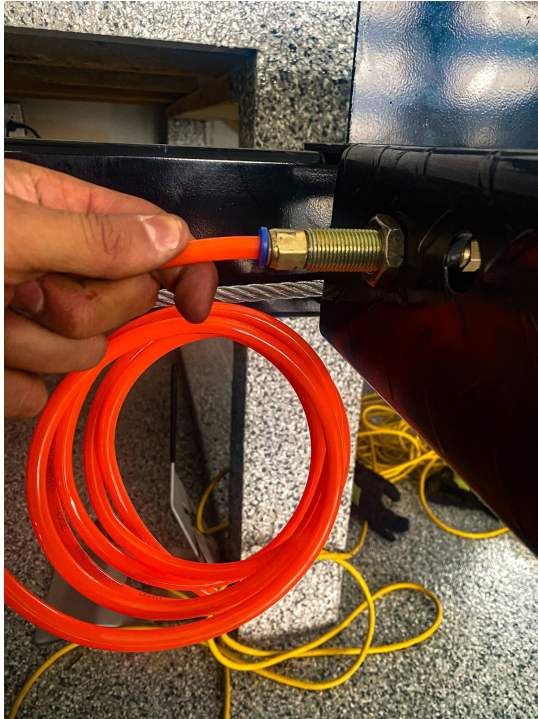
Step Nine:

Connect the 2 pieces together.

Step Ten:

Insert the fitting into the designated hole on the **right** side of the motor. (where you removed the yellow plug). Fastened the fitting to the motor using a **19mm** wrench.



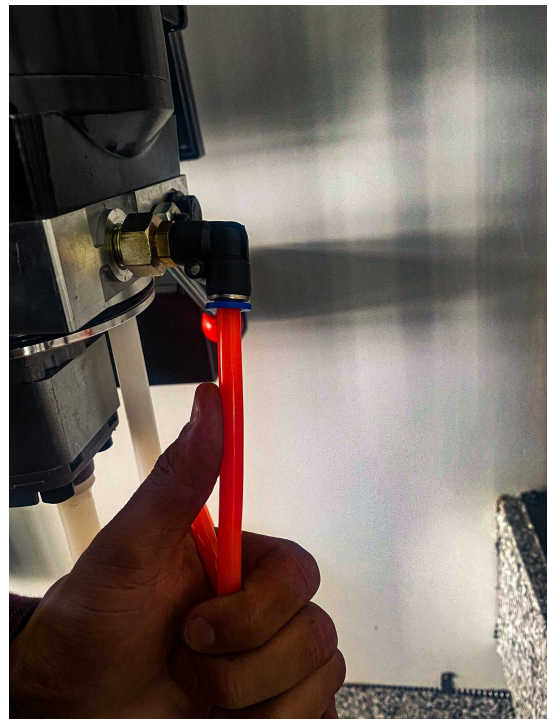


Step Eleven:

Locate the airline hose in the main hardware box, remove all zip ties holding it together and connect either end to the runway fitting. Simply push into place.

Step Twelve:

Take the other end of the hose and connect it to your newly installed motor fitting. Once again, simply push into place.



***BEFORE POWERING UP THE UNIT, PLEASE
ENSURE ALL FITTINGS HAVE BEEN PROPERLY
FASTENED.***
