



# Installation Companion Manual

Pro King 8 / Pro King 8 XXL

[www.liftking.ca](http://www.liftking.ca)

---

# **\*READ FIRST\***

Although many lifts look similar it is important that you do not use this companion guide to install ANY lift other than the PRO KING 8 and the PRO KING 8 XXL. Although other units may look the same there is critical differences between them that need to be observed. Lift King does not sell under any other name, be sure you have purchased your lift off a licenced distributor. If you are unsure if this manual will work with your lift

please call  
1-866-610-5464  
to speak with a Lift King representative

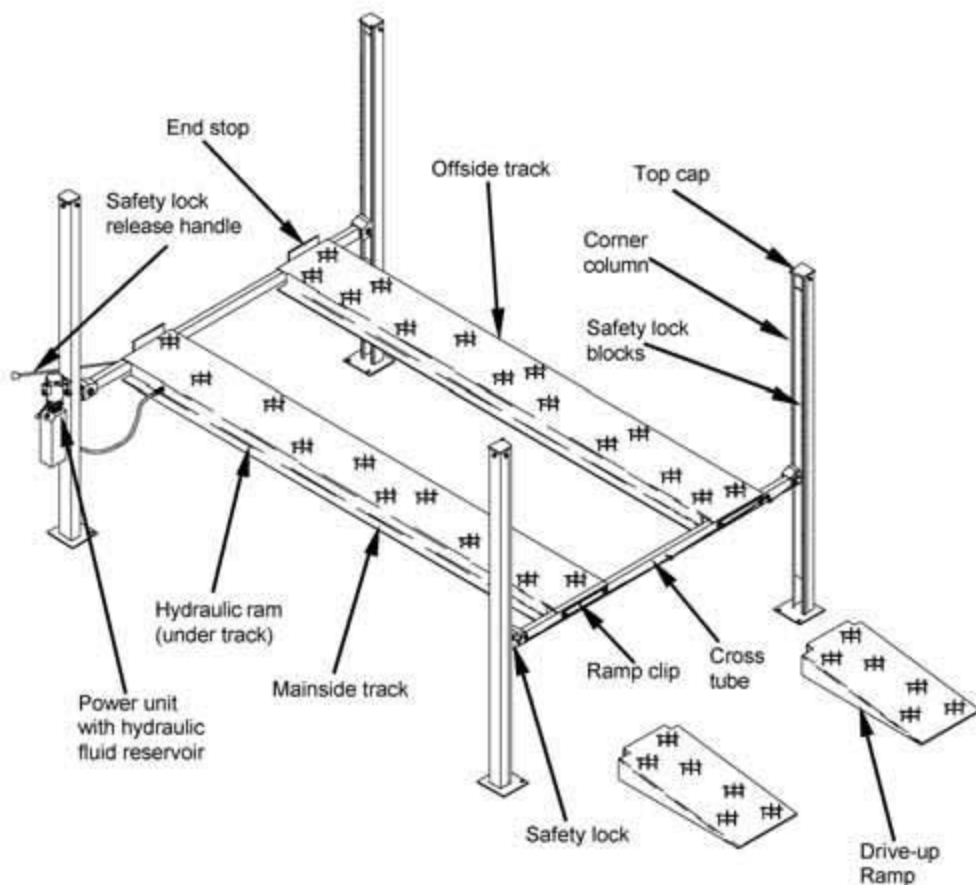


---

## ***The Major Components Of Your New Lift***

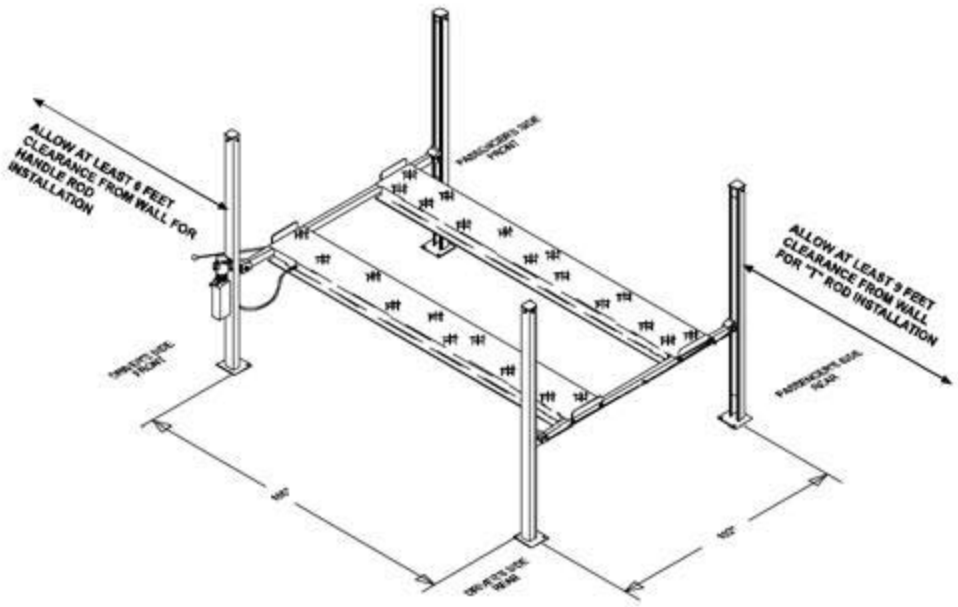
---

Before you get started assembling your new lift, let's take a moment and become familiar with some of the major components. Becoming familiar with the major components of the lift will make the assembly task quicker and easier.



**Major Components of the Pro-King 8 Series Lift**

---



**Floor Plan For Initial Column Positioning**

---

# **Let's Assemble Your New Lift**

---

## **Assembling Your Lift**

Now that you have your lift unpacked and close to the installation site you may begin assembly. You will need at least 1 friend, we recommed 2 as many of the parts are fairly heavy.

## **Positioning and Assembling the Columns**



Position the columns according to the floor plan on the following page. Check your lift floor plan before positioning the columns, and then check again after you have positioned them - the assembled columns are very heavy and difficult to move.

Ensure the locks on the columns are facing out on both sides. The locks on the crossbars should also face outwards on both sides.



Have a friend help lift the crossbars into place. Once safely on the top lock ensure that the columns and crossbar are level.



Using 2 people, lift the safety locks and slowly lower the crossbar evenly to the lowest lock position. Keep your fingers out of the track - the safety locks aren't heavily loaded, but you can still get your fingers pinched.

Repeat for the other columns and crossbar. When you have completed this step your lift should look like the pictures below. Ensure that the locks are facing outward on both sides, the pulleys should all be on the inside.



Now your posts are assembled measure either one of the tracks from end to end.



---

## ***Install the Tracks***



Now that you have the measurement for the track adjust the crossbars from outside to outside accordingly.

You can now lift the ramps into place. The track with the hydraulic ram goes closest to the motor mount with the rivets facing outwards (this is where the tarp hooks onto).

You will need at least 1 person to help you lift the tracks, we highly recommend 2 or 3 friends helping.



Align the holes on the crossbar with the holes on the track. On the front of your lift install the ramp clips. After both tracks are installed tighten all the track bolts to a torque of 75 ft-lbs.

**\*\*DO NOT OVER TOURQUE\*\***



**WARNING!**

**Do not leave the tracks unbolted – install the mounting bolts immediately!**

---



**On the rear side of your lift install the stopper plates. These bolts will also need to be torqued to 75 ft-lbs.**

**Congratulations, all of the heavy work is now complete!**

---



---

## **Install Column Top Caps**



Locate the column top caps and the 1/2" x 7" bolts (4) and the 1/2" x 1 1/4" bolts (4).

Secure the top caps with the 1/2" x 1 1/4" bolts. Place the bolts with the washers in through channel and secure with washers and nuts on the outside of the column. Tighten the bolt to a torque of 75 ft-lbs.

Install the 1/2" x 7" bolts through the column and top cap. Tighten this bolt to a torque of 50 ft-lbs. Do not over torque as this may warp the column channel and bind the guide blocks.



---

## ***Extend The Ram Using Compressed Air (Preferred Method)***

This is the easiest way to extend the ram, provided you have a regulated compressed air supply available. When using this method, do not apply air suddenly to the ram - use the air supply regulator to gradually increase the air pressure and do not exceed 40 to 45 psi or the ram will extend too quickly.



First remove the metal plug on the rear of the hydraulic ram, attach your air supply hose and tighten. Slowly increase air pressure from 0-40 psi, if the ram does not extend at 40 psi tap on the metal plate using a mallet, do not exceed 45 psi.

Once the ram is extended remove the air supply hose and re-attach the metal plug (be sure to use either teflon tape or lock tight on the plug to prevent leakage).

You are now ready to run the cables.

---

---

## ***Extend The Ram Using A Come-Along or Winch***

If you do not have a regulated compressed air supply, you will have to manually extend the ram to a position approximately 18" from the opposite cross rail. If you are using a winch on a vehicle, make sure the lift is securely braced in order to prevent injury and damage to your lift, your vehicle or your building.



**Attach the stationary end of the come-along to the hole drilled on the cross rail.**



**Wrap the cable around the metal plate, be sure to wrap around the inside of the ram and not the cable ends.**



**Extend the ram to approximately 18" from the cross rail.**

---

---

## ***Installing the Cables***

At Lift King we have gone the extra mile to make this an easy installation. the cables have been preattach, all that is left to do is run them around the pulleys and up the posts.



Feed the top cables around the top pulley and feed the bottom cables around the bottom pulleys then out the sides.



On the opposite side feed the cables around the pulleys and then out the sides.

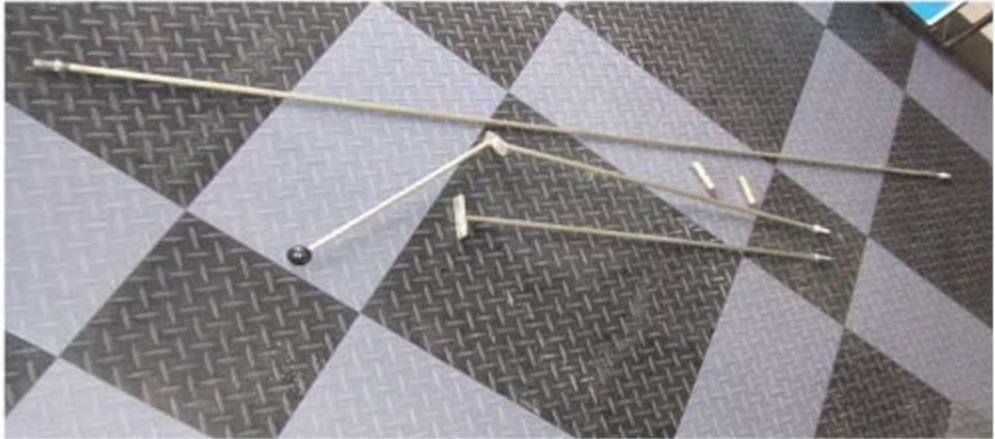


Run the cable around the pulley and up the post and secure the bolt end in the column top cap. Place nut on bolt end hand tight.

---

---

## ***Installing the Safety Rods***



**Locate and identify the components needed to install the safety lock rods.**



**Attach nut and collar to one side of the longest rod, hand tighten the collar as much as possible then tighten the nut.**



**Remove any hardware attached to the opposite end of the longest rod.**

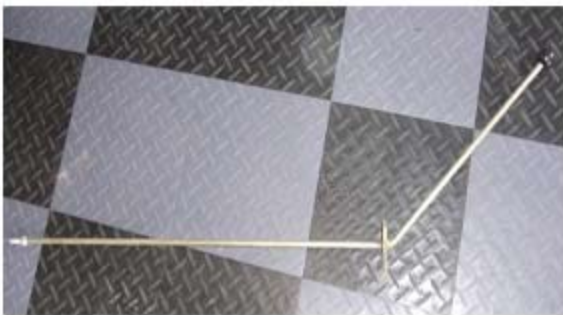
---



Install the longest rod into the ram side runways. Place the collar end closest to the post with the motor mount.



Ensure the rod has gone through the centre sleeve welded on the inside of the runway.



Remove any hardware from the handle rod.





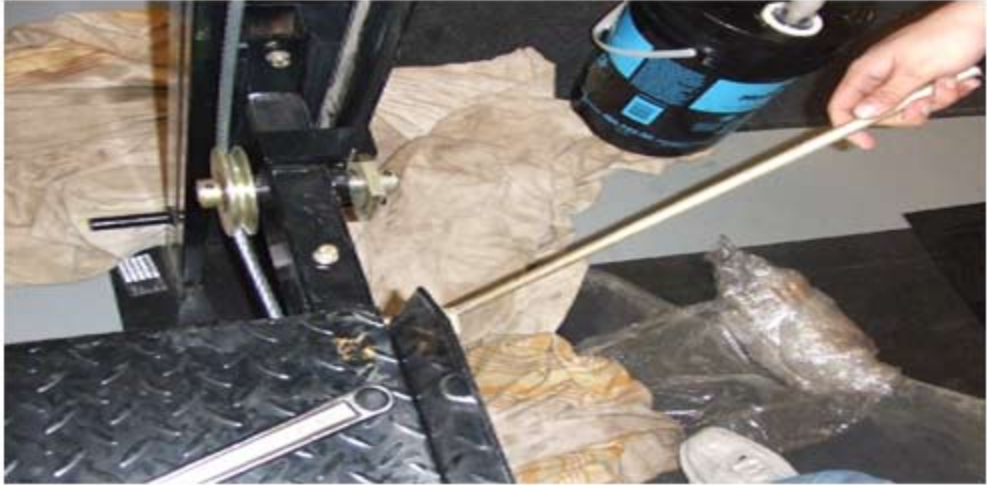
Install the handle rod through the motor side of the runway.



Reattach the nut to the handle rod and thread the rod onto the collar.



Have some hold the already tight nut with a 3/4 " wrench.



While someone holds the nut turn the handle until the rod is as tight as possible.



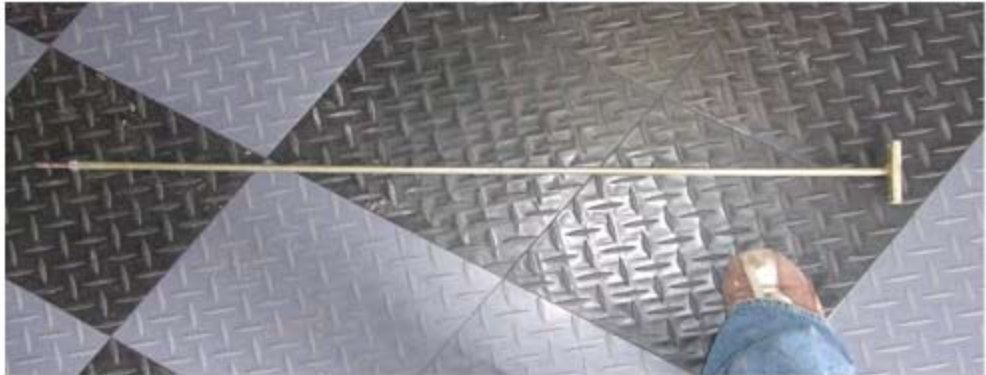
Now that the rod is tight, tighten the nut to secure the collar.

---





**Position the handle at 11:45 position and attach the metal rods to both locks.**



**Now that the handle rod is securely attached locate the end rod and remove any attached hardware.**



**Insert the end rod through the opposite side and attach nuts to both the end rod and long rod. Attach the collar to the LONG rod first and tighten the nut to the collar.**



**Using a wrench tighten the end rod as tightly as possible and position in the 12:15 position. Attach rods to safety locks, tighten nut to the collar. The safety lock system is now complete.**

---

---

## Installing the Hydraulics



Locate the rubber motor mounts and attach them to the post with the motor attachment plate



Attach the motor to the rubber mounts, tighten the nut only until the lock nut closes, over torquing will cause the bolt rip out of the motor.

**\*\*Have a qualified electrician wire the motor, improper wiring can cause serious injury.\*\***

---

---

## Installing the Hydraulics



Now that a qualified electrician properly install the wiring attach the hydraulic hose both at the runway and the motor, teflon tape is recommended to prevent any leakage.



Fill the oil tank until your oil level reaches inbetween the 2 lines on the dip stick.

You are now ready to operate the lift.

---

---

## Adjusting the Cables



Upswitch

Release Valve

Operate the power unit by holding the upswitch (The power unit may take a minute or two to prime and evacuate all air.) Take the slack off the cables.



Check all pulley bolts and pulley collars to make sure that are tight. Inspect the cables to ensure all are on track and on the pulleys. **DO NOT PUT YOUR FINGERS BETWEEN THE CABLE AND THE PULLEY!**



Operate the lift to its highest position. Inspect all the safety locks. All safety locks should be at least 1" clear of highest safety stops. Safety locks require at least 1" to disengage.

---



Lower the lift  
half way and rest  
it on the locks .



Raise the lift until the closest locks corner becomes flush  
with the bottom of the lock pin.





**Inspect the other locks, ensure they are flush as well. If a lock is too low tighten the nut on the cable until it is flush, if it is too high loosen the nut. This will ensure all the locks will clear the safety stops simultaneously.**



**It is not unusual to have to put both nuts on the top.**



**Congratulations your new Lift King lift has now been fully installed. We hope this companion manual has been helpful in the installation of your new lift, please refer to manufactures installation guide to set up your accessories and for maintance procedures. It is important that you read both manuals, remember this is industrial machinery and should be treated as such, every possible safety procedure should be observed.**

---