

BOLTRAIL

Discover the BoltRail Advantage

BoltRail Benefits



FAST

Quick Set-up,
Install & Removal



EASY

Flexible & Simple
to Use



ACCURATE

Optimized for
Precise Alignment



SAVES TIME

Saves Labour &
Survey Time



SAVES MONEY

Saves Labour Costs
& Costly Re-works



MODIFIABLE

Quick & Easy to Site
Modify



SAFE

Quality Assurance &
Quality Control




ADAPTABLE

Reusable & Designed
for Multiple Applications



QUALITY

Made in North America
from Durable Materials



*The reusable concrete anchor bolt template
that saves time & improves productivity.*

BOLTRAIL

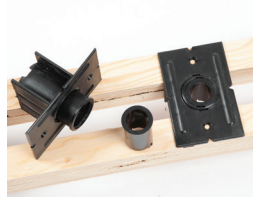
Anchor Bolts Set Quickly + Accurately

BoltRail Features



Durable LVL Rail Assembly

North American LVL engineered lumber. Four standard lengths 26", 33", 45" & 55".



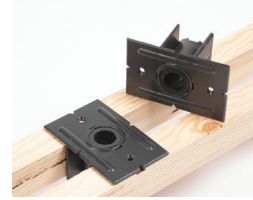
Bolt Holders & Sleeves

Sleeved bolt holders accommodate 3/4", 1" & 1-1/4" diameter bolts. Each rail order comes with 2 bolt holders.



Surveyor's Sighting Windows

Sighting windows make for easy alignment with surveyor's marks and accurate QA/QC checks.



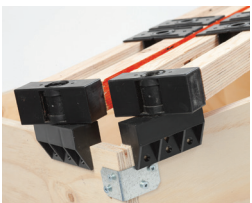
Alignment Guides

Bolt holder alignment guides allow precise setting, alignments and accurate QA/QC checks.



Allows For Multiple Bolts Per Rail

Designed to fit multiple bolts per rail. Bolts can be offset from rail to rail to fit complex bolt patterns.



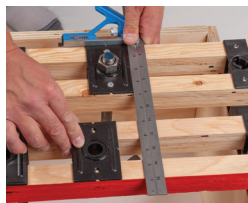
Rotating Supports For Added Flexibility

Rotating supports allow rails to fit formwork geometry and be installed precisely in the required location.



Adjustable Sliding Support Pier

Sliding support piers adjust to the form width and adapt to multiple applications and configurations.



Bolts Are Set Relative To First

Bolt holders can be set relative to the first bolt holder saving valuable installation and survey time.



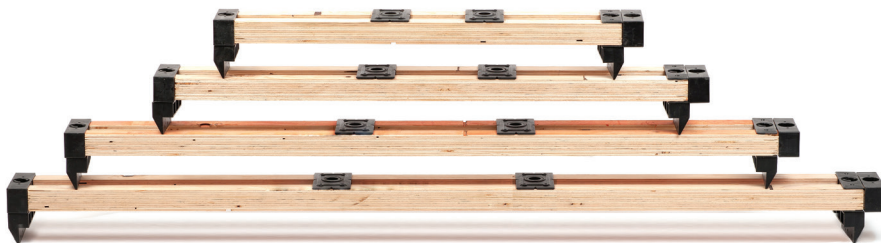
Modifiable & Adaptable To Suit Job Site

Rails can be cut to set inside formwork. Rails can be set level even when formwork is uneven.



Adjustable For Multiple Reuses

BoltRail is adjustable and can be removed & reused multiple times in various configurations.



Installation Applications

- *Form Set*
- *Suspended Falsework*
- *Inset*